

FORESTHILL BRIDGE RAILING TO BE RAISED

The Confluence

Winter 2010

At over 700 feet above the river, the Foresthill Bridge offers spectacular soaring views of the Confluence Area, but it has an unintentional dark side. For over 25 years now we have been cleaning thousands of pounds of trash dumped from the bridge each year and the number of suicides has increased dramatically in the last couple of years as well. This adds up to a very unsafe situation for those recreating on the

popular trails and river below. Finally, a glimmer of hope has emerged from the collaborative plans between Placer County, CalTrans and the Federal Government to perform seismic retrofits, safety upgrades and a repaint to the aging Foresthill Bridge in the next couple of years. Ken Grehm, Placer County Public Works Director, is fairly certain that the bridge railing height will be increased to about 72"

from its current 42" height. A center safety lane will be added to fill the gap in the center of the bridge. These improvements will make it much more difficult to toss trash off the bridge and more importantly discourage suicidal jumps from the bridge. PARC will continue to monitor the Foresthill Bridge safety improvement plan and will keep you informed if public comments are needed.

NOMINATIONS OPEN FOR GEOTOURISM SITES

National Geographic Society defines geotourism as tourism that sustains or enhances the geographic character of a place, its environment, culture, aesthetics, heritage and the well being of its residents. Geotourism includes adventure and nature based travel, eco- and agri-tourism, cultural and heritage travel. Basically,

Continued on pg 2



PARC nominates the Confluence to China Bar American River Run for inclusion in our Geotourism Guide. This stretch of river, below Auburn, features many opportunities to experience American River history, ecology and the challenge of the new Pump Station Whitewater Rapids at China Bar.

Inside this issue:

PARC's Grub	2
NEW AMERICAN RIVER GUIDE BOOK	3
Fall Clean up	3
OUTINGS & Arts	4 & 5
Membership & Ads	6
PARC Funds Low	7
New Sierra License Plate	7

DATES TO ADD TO YOUR CALENDAR:

- Jan 23- Grizzly-Squaw Flat Hike pg 4
- Feb 12&13- "End of the Line" Film pg 4
- Feb 20&27- Clay Workshop&Hike pg 4
- Feb 27- American River Arts Show pg 4
- Mar 5,12,19- River Performance Art pg 4
- Mar 20- Firebelly Hike pg 4
- April 7-28- Wed. Nite Lecture Series pg 5
- June 12&13- Confluence Festival pg 8



Nominations for Geotourism Sites

Continued from pg 1

tourists who seek out places for their unique natural or cultural attributes are the target audience of this National Geographic project. The guides, which will be available online and in print, offer destination information that identifies a region's unique natural, historic and cultural attractions.

The National Geographic Society is working with the Sierra Nevada Alliance, the Sierra Business Council and community based alliances to develop Geotourism MapGuides that celebrate the world-class heritage of the Sierra Nevada region. Local residents and businesses, community organizations, Sierra visitors and other stakeholders are invited to nominate sites for inclusion in the web site and MapGuide. A Geotourism

Council, representing the geographic and interest group diversity of the region, will be established to review and evaluate the nominations. National Geographic will not nominate sites but will have the final say on what is included on the maps.

This is a great opportunity to get involved. We, as residents of the Sierra, are being asked to identify destinations and experiences distinctive to our community or locale. To make your nominations, go to www.sierranevadageotourism.org. The types of sites to consider include natural areas and outdoor adventures, trails and scenic routes, historic or cultural sites, events and festivals, local arts and music, farmers markets and agrotourism, lodging and restaurants, wineries

and other local businesses. The list can include, essentially, anything that is authentic to the Sierra Nevada and unique to your community.

In the spirit of conservation PARC recommends nominations that do not abuse or degrade the natural, historical, cultural or recreational values of the attraction being recommended for inclusion in the Geotourism MapGuide. Environmentally aware travelers seek a quality experience that does not harm the environment and they support business that conserves resources.

~ Jim Ricker, Geotourism Advisory Committee Member and North Fork American River Alliance President, contributed to this article.

PARC Grub



Don't be tempted to add this important wood decomposer to your bottle of Tequila!! While cutting firewood on his property, Tom Peterson discovered this larvae of the Spined Woodborer. *Ergates spiculatus*, found on Page 180 of Laws' Sierra Nevada Guide, metamorphoses into the largest beetle found in the Sierra Nevada.

The Confluence

is a seasonal, or as needed, publication of **Protect American River Canyons**. *The Confluence* is included with basic annual membership.

**P.O. Box 9312
Auburn, CA 95604**

Edited by Eric Peach
Layout by Alice Tenscher Dunbar
<http://www.parc-auburn.org>
E-mail: parc@jps.net

Thanks to our advertisers

*Special thanks to
Laurel and LeAnn
of Mystic Design.*



American River Guidebook Update



The American River Guide Book revisions will get colorful additions from author and illustrator John Muir Laws. As we work to update the natural history chapter of PARC's American River Guide Book we will feature a sample of the color illustrations of plants and animals found in Laws Guide to the Sierra Nevada. John, who has been PARC's guest on several river kayak adventures, has created special original illustrations of the toyon shrub and button

willow bush for PARC's guide book. His illustrations can also be found in the river~canyon profile of PARC's Confluence Parkway MapGuide. We plan to have the revised and updated American River guidebook available at the Confluence Festival in June. Many of the other sections of the guide book will be updated as well. Stay tuned for our progress. The revisions and reprinting are made possible by a grant from Sierra Nevada Conservancy.

Fall American River Cleanup a Huge Success



We would like to thank our river cleanup volunteers and donors over the years especially this last fall when we collaborated with the Sierra Nevada Conservancy for their first annual Great Sierra River Cleanup. The Auburn State Recreation Area Staff and Canyon Keepers, the California Conservation Corps, CHP, PG&E, Recology, and Assemblyman Ted Gaines were also important participants. Soon we will be able to focus more attention on trails and interpretive activities in the canyon and less on river cleanups.

CHP Helicopter removes a net bag of trash from beneath the Foresthill Bridge.

WINTER-SPRING AMERICAN RIVER EVENTS CALENDAR & VOLUNTEER OPPORTUNITIES

Join friends for a series of fun adventure based hikes that explore the ecology and cultural history of the American River.

Saturday, January 23 Grizzly Bear House Squaw Flat Hike

A rigorous approximately 5 mile loop hike on and off the Foresthill Divide Trail through oak woodlands, madrone forest and chaparral where we will explore the effects of the 2009 fire in the Mammoth Bar OHV area search for fungi and keep an eye out for intriguing birds that alternate between the habitats we will be hiking through. For Info meeting time and place contact Eric @ 530-885-8878 or email parc@jps.net.

Friday & Saturday, February 12 & 13 7:00 pm Film “The End of the Line”

This movie is the first major documentary film to reveal the devastating effects over-fishing the major species of edible fish is having on the earth's oceans and ecosystems. The film will be screened at Auburn's State Theater by Save the Auburn Ravine Salmon & Steelhead Group and the Auburn Performing Arts Center. For info and details contact Scott Johnson @ 530-878-1566 or visit www.sarsas.org



American River Arts Show...

celebrates the importance of the American River to our regional communities and beyond.

Saturday February 27 6:00pm - 8:00 pm

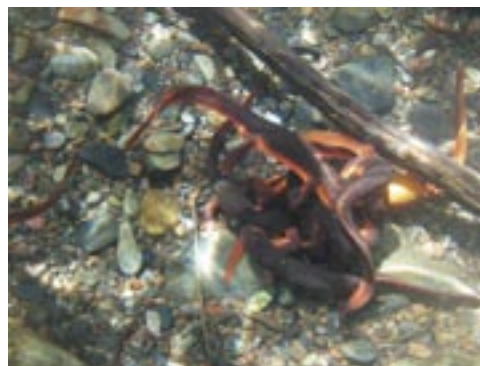
PlacerArts, Stan Padilla and PARC present a group exhibition of works and expressions inspired by The Wild & Scenic American River at the Arts Building Gallery in Auburn throughout the month of March. Visual, performing and literary artists will gather to exhibit recent 2 and 3-dimensional art creations.

Friday Evenings March 5, 12 & 19-7:00pm to 9:00 pm

American River Performance Art will be featured. Join the artists for slide shows, musical performances, poetry readings, dance, film, and interactive art demonstrations inspired by the river. Check the PlacerArts.org or parc-auburn.org website for times and details.

Saturday, March 20 Vernal Equinox ~ AMERICAN CANYON FIREBELLY HIKE

The California Newt is a fairly large salamander with a fiery-orange belly from which it derives its nickname “firebelly”. For the short version of this annual hike we will descend approximately 2 miles into American Creek canyon observing the newts and picnicking at a waterfall. The hike out is moderately steep. We may explore other nearby trails and loop out on a different trail. For meeting time and location contact Eric @ 530-885-8878 or Tom @ 530-333-4911 or Twcoyote532@hotmail.com



California Newts gather in American Creek

Auburn Recreation District

Offers American River Enrichment Classes:

Primitive Clay Mask & Pit Firing Workshop Saturdays February 20 and 27th

Animals of the American River will be the theme of this terra cotta clay mask making Auburn Recreation District workshop taught by Eric & Paula Peach. We will make the masks on the 20th and then travel to the river for the pit firing at Ruck-a-Chucky on the 28th. The workshop also includes an easy exploratory hike along the Middle Fork on the Poverty Bar Trail. To register for the workshop contact ARD @ 530-885-8461 or register online www.auburnrec.com. Cost is \$35.

RIVER EVENTS CALENDAR

The Wild Side of Auburn-

Wednesday Evenings April 7-April 28 7:00pm 9:00pm

Come learn more about the local geology, ecology, human and natural history of the Auburn Area through multimedia presentations and discussions led by Scientist Dr. Laird Thompson and a panel of local educators. The Wednesday classes include an optional hike at 9am the following Saturday. The class will be held at the Auburn Recreation Park Craft Room. To register for the classes contact ARD @ 530-885-8461 or register online at www.auburnrec.com. Cost is \$40.

Correction Note: Auburn Journalist Gus Thompson contributed the Historic Western States Trail Designation article in PARC's Fall Confluence Newsletter. Sorry for the oversight Gus!



Mike Anderson

Locally in Auburn

www.pacificcitymtg.com

562 810-5567

mike@pacificcitymtg.com



PATHWAYS



TO HEALTH

14 EXPERIENCED MASSAGE THERAPISTS

SPA & HEALING CENTER

STEAM ROOMS • DRY SAUNA • JACUZZI BATHS • SHOWERS
GIFT CERTIFICATES

530-888-6534

13122 LINCOLN WAY, AUBURN, CA 95603

e-mail: pathways@foothill.net • web site: pathways2health.net

SIERRA OUTDOOR CENTER

KAYAK SCHOOL, RENTALS, RAFT REPAIR, CROSS COUNTRY SKIS
SNOWSHOES AND RETAIL STORE



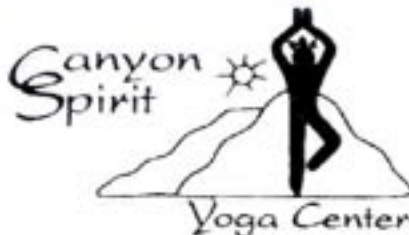
530 885-1844

440 LINCOLN WAY AUBURN

**CANYON
RAFT RENTALS**



Self Guided or Instruction
Rafts from 10 to 16 feet
Inflatable Kayaks, Sit-on-Top Kayaks
www.canyonraftrentals.com
(530) 823-0931



*Be with
those who
help your being.*

538 Auburn Ravine Road, Auburn, CA 95603
(530) 885-6407 • www.canyonspirityoga.com

Jusan Whitaker, Director

PARC Membership Information

Protect American River Canyons is a river education and conservation organization dedicated to the protection of the natural, recreational, cultural and historical resources of the North and Middle Forks of the American River and its canyons. **PARC** is very active in the community, sponsoring a variety of social, river service and educational events each year. **PARC** remains vigilant to the political threats to the river canyons.

To schedule an American River Confluence Parkway presentation for your group, contact PARC at (530) 885-8878.

Visit our web site at <http://www.parc-auburn.org>

Yes! I want to join PARC and help shape the future of the American River!

Send to: PARC, PO Box 9312, Auburn, CA 95604

ANNUAL MEMBERSHIPS

- \$25 Regular Member**-Receive the new Confluence Parkway Map
- \$40 Membership**-Receive Eco River String Bag
- \$50 River Guardian**-Receive Tom Peterson's Georgetown Divide Hiking Trails of the American River or The Canyon Keeper's American River Trails Guide Book+ASRA topo map
- \$100 River Patron**
Receive John Muir Laws "Guide to the Sierra Nevada" flora and fauna book (Normally sells for \$24.95 + \$5 for shipping.)

Please don't send me the membership premiums

PARC is a non-profit 501(c)(3) organization. Donations are tax deductible to the full extent of the law.

THANK YOU TO OUR NEW AND RENEWING MEMBERS!

Visit our PARC bookstore at:
www.parc-auburn.org
to purchase a variety of great publications

Name _____	
Address _____	
City/State/Zip _____	Phone (____) _____ hm
(____) _____ wk	E-mail _____

Wild Bird Station
The Backyard Bird Feeding Specialty Store



"Time to Get Outdoors and Enjoy the Birds."

15% Discount if you mention this ad

**In Victorian Village • 530 889-BIRD
1153 Grass Valley Hwy. • Auburn**

OUR STORE IS "STRICTLY FOR THE BIRDS"



823-9900
LIC. 375323

Jim Doughty • 150 Elm Ave. • Auburn, CA 95603

PARC Seeks to Increase Funds

PARC's current fiscal situation is a reflection of the general economy. The general account has decreased to a level concerning to the board of directors.

We urge members to renew their memberships and donate at a level you feel you can afford. PARC needs to continue offering quality programs to the American River community.

To renew your membership or donate to the general fund please see the Membership form on page 6 for PARC's mailing address.

You are also invited to join us in the drive of "Leaving a River Legacy." The legacy is both an endowment fund, and the drive to keep the canyons Forever Wild & Scenic, which is PARC's mission.

For questions about contributing to the Endowment Fund, including information about your giving options, please contact Veronica Blake, Placer Community Foundation at (530) 885-4920, or visit their website at www.placercf.org. If you would like to contribute to the Endowment Fund, you can:

- (1) Send a check payable to "PCF/PARC Endowment." Mail to Placer Community Foundation, P.O. Box 9207, Auburn, CA 95604, or
- (2) Donate on-line at www.placercf.org and look at the right side of the page and click on the box "donate now." Select "PARC

What is the Sierra Nevada License Plate?

The sales of Sierra Nevada License Plates will benefit the Sierra Nevada Conservancy Program which provides funding for conservation, habitat restoration, recreation, and other environmental projects in the Sierra Nevada. These special plates will be issued by the California Department of Motor Vehicles upon receipt of 7,500 paid pledges.



How does the process work?

The Sierra Nevada License Plate campaign needs 7,500 paid pledges within a year in order to meet the legislated requirements to issue a new special license plate. After these have been received, the money and pledges will be turned over to the DMV for processing. The DMV will notify each person who paid for a plate as soon as their plate is available for pick-up. If the campaign does not receive 7,500 paid pledges by September 2010, each person who paid and completed a pledge will be given a full refund of their payment.

What if the campaign does not gather the necessary registrations?

If the campaign cannot collect 7,500 plates by September 14th, 2010, the campaign will either apply to DMV for a one year extension, or return your payment in full. In either case, you will be notified as soon as possible and given the option to have your pledge refunded.

Is the License Plate purchase tax deductible?

The pledge payment is not tax deductible UNTIL you receive your license plate. At the point you receive your license plate, the vehicle license fee part of your payment is the only part of your annual vehicle registration payment that may be deducted on your income tax. The vehicle license fee can be found on your Vehicle Registration Renewal Notice Validated Registration Card.

Questions????

For all questions about the Sierra Nevada License Plate program please call the Sierra Nevada Conservancy license plate line at 530-823-4680 or email licenseplate@sierranevada.ca.gov **Order Now!**



Think about **"Going Green."**
Get your PARC Confluence Newsletter
E-mailed to you.

Send your request to: parc@jps.net
Plus you will get to see a lot of the cool
pictures in color on your computer screen!

Return Service Requested

*Protect American River Canyons
is dedicated to the protection and
conservation of the natural,
recreational, cultural and
historical resources of the North
and Middle Forks of the American
River and its canyons for all to
responsibly care for and enjoy.*

New World Library Helps PARC Expand Confluence Festival



The New World Library provided PARC with its first major business sponsorship for the **Nineteenth Annual Free AMERICAN RIVER CONFLUENCE FESTIVAL on Saturday and Sunday, June 12 & 13 2010**. This year we are planning an expanded river festival to include a Community Paddle Day from the Confluence to China Bar on Saturday June 12 and bring back our popular Saturday evening films on the River Stage at the American River Overlook Park on Pacific Avenue in Auburn. PARC's annual river festival features family-friendly nature, art, and canyon recreational activities information booths, and delicious food in a shaded river village atmosphere.

For more information on how your business can help sponsor the festival or to volunteer contact Michael Anderson @ 562-810-5567 or his email: (amriver@gmail.com) or Andrea Rosenthal @ 530-887-9314